

We are proposing a change in your area

Kia ora,

This leaflet is to let you know about a change we are proposing to make in your neighbourhood.

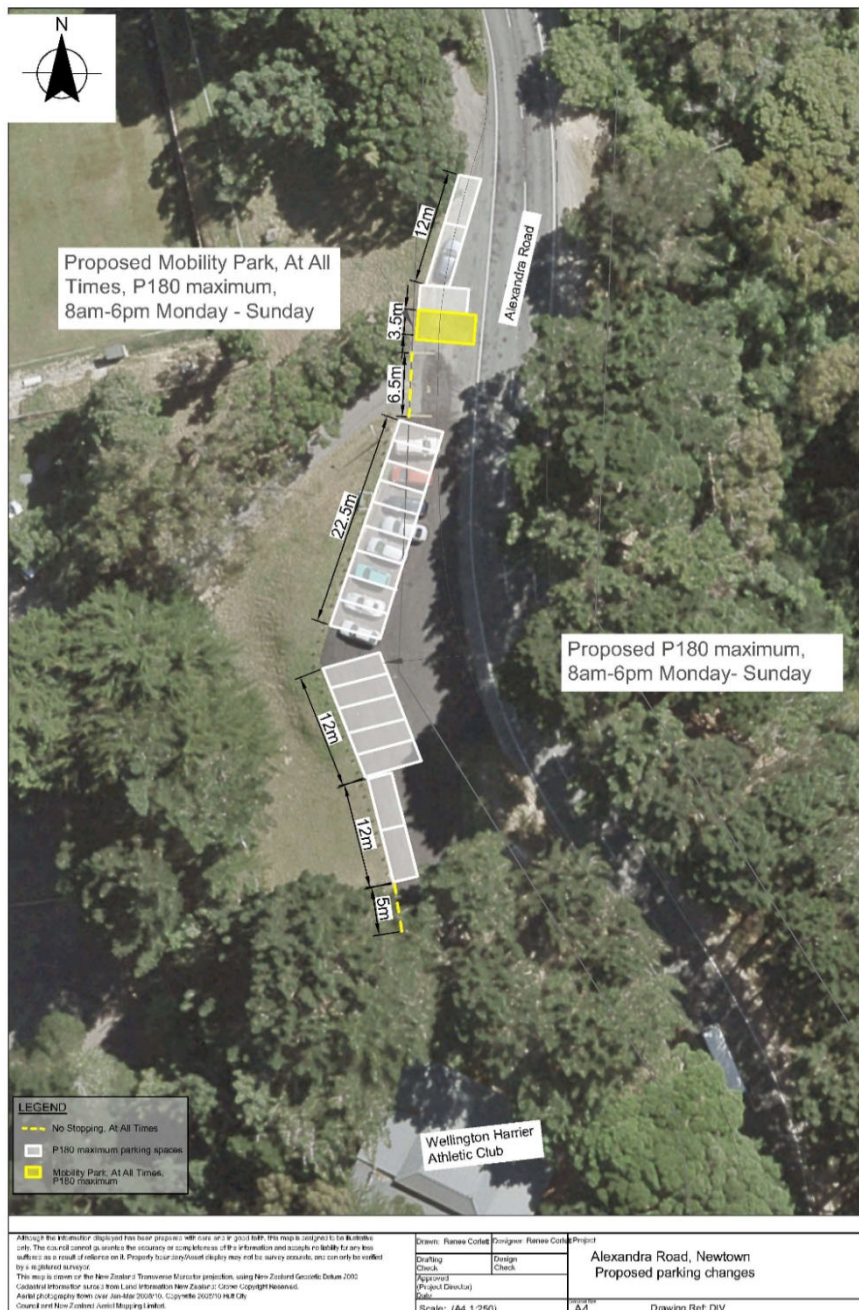
Proposal:

Reference	TR64 -21 Alexandra Road carpark, Newtown – P180 time limited parking; P180 time limited mobility parking; No Stopping At All Times
What we'd like to do	<ul style="list-style-type: none">• Designate 19 P180 time limited parking spaces in the Alexandra Road carpark.• Designate one mobility park, At All Times, P180 time limited in the Alexandra Road carpark.• Designate 6.5 metres of no stopping restriction over the driveway access to the Wellington Croquet Club.• Designate 5 metres of no stopping restriction to the entrance of the Wellington Harrier Athletic Club.
Why we are proposing the change	<ul style="list-style-type: none">• We are proposing to implement P180 time restricted parking within the Alexandra Road carpark. This is to ensure a higher turnover of vehicles, while giving greater accessibility to adjacent amenities. This proposal will allow parking for legitimate facility users rather than all day commuter parking.• We are proposing to designate a P180 time limited mobility park to increase safety and accessibility for mobility park users.• We are proposing to install two lengths of no stopping restriction to ensure unobstructed access to both the Wellington Croquet Club and Wellington Harrier Athletics Club.
Location – where we propose to make the change	Alexandra Road carpark, Newtown – near no.162
Impact	<ul style="list-style-type: none">• Improves accessibility to the Wellington Croquet Club, Wellington Harrier Athletics Club, Mount Victoria mountain biking tracks and walks.• Net parking impact – designation of 19 unrestricted parking spaces to time restricted parking spaces and one unrestricted park to a time restricted mobility parking space• Pedestrian impact – positive due to improved locations and designation of carpark spaces.
How this relates to the parking policy	<ul style="list-style-type: none">• Supports short term parking over long term commuter parking spaces.• Supports access for all – ensures mobility impaired people, older people, people who are pregnant, and people with babies can access the city, Council facilities, and venues. This will be achieved, in part, through an improvement in mobility parking across the city.
Additional Information	<ul style="list-style-type: none">• Average daily traffic count – 1, 380. <p>To view the legal description for this Traffic Resolution, an electronic copy of the report will be available on the Council's website from 9.00am Thursday 1 April 2021 at www.wellington.govt.nz/haveyoursay or you can call (04) 499 4444 and we will send one out to you.</p>

We are proposing a change in your area

Feedback	<ul style="list-style-type: none">• If you would like to provide us with specific feedback, you can do so by filling out an online submission form, downloading a printable submission form on www.wellington.govt.nz/haveyoursay or emailing us at trfeedback@wcc.govt.nz . Please note if you are giving feedback the consultation period opens 9.00am Thursday 1 April 2021 and finishes 5.00pm Friday 16 April 2021.• What we do with your personal information: All submissions (including name, but not contact details) are provided in their entirety to elected members and made available to the public at our office and on our website. Personal information (including contact details) will also be used for the administration of the consultation process including informing you of the outcome of the consultation. All information collected will be held by Wellington City Council, 113 The Terrace, Wellington, with submitters having the right to access and correct personal information.
Next Steps	<ol style="list-style-type: none">1. Feedback collated by Monday 19 April 2021.2. The proposal will go to the Regulatory Processes Committee on Tuesday 18 May 2021.3. If approved, the proposal will be installed within the following 3 months.

Traffic Resolution Plan: TR64-21 Alexandra Road Carpark, Newtown - P180 time limited parking; P180 time limited mobility parking; No Stopping At All Times



We are proposing a change in your area

Legal Description:

Add to Schedule A (Time Limited) of the Traffic Restrictions Schedule

Column One	Column Two	Column Three
Alexandra Road Carpark	<i>P180 maximum, 8am-6pm Monday - Sunday</i>	<i>West side of the Alexandra Road Carpark (Refer to attached plan, white)</i>

Add to Schedule C (Class Restricted) of the Traffic Restrictions Schedule

Column One	Column Two	Column Three
Alexandra Road Carpark	<i>Mobility Park, At All Times, P180 maximum, 8am-6pm Monday - Sunday</i>	<i>West side of the Alexandra Road carpark extending 3.5 meters (Refer to attached plan, yellow)</i>

Add to Schedule D (No Stopping) of the Traffic Restrictions Schedule

Column One	Column Two	Column Three
Alexandra Road Carpark	<i>No Stopping, At All Times</i>	<i>West side of the Alexandra road carpark, extending 5 metres near the entrance to Wellington Harrier Athletic Club (Refer to attached plan, broken yellow lines)</i>
Alexandra Road Carpark	<i>No Stopping, At All Times</i>	<i>West side of the Alexandra road carpark, extending 6.5 metres over a driveway entrance to Wellington Croquet Club (Refer to attached plan, broken yellow lines)</i>

Prepared By: Renee Corlett (Transport Engineer)

Approved By: Amin Shahin (Team leader Transport Engineering)

Date: 19/03/2021